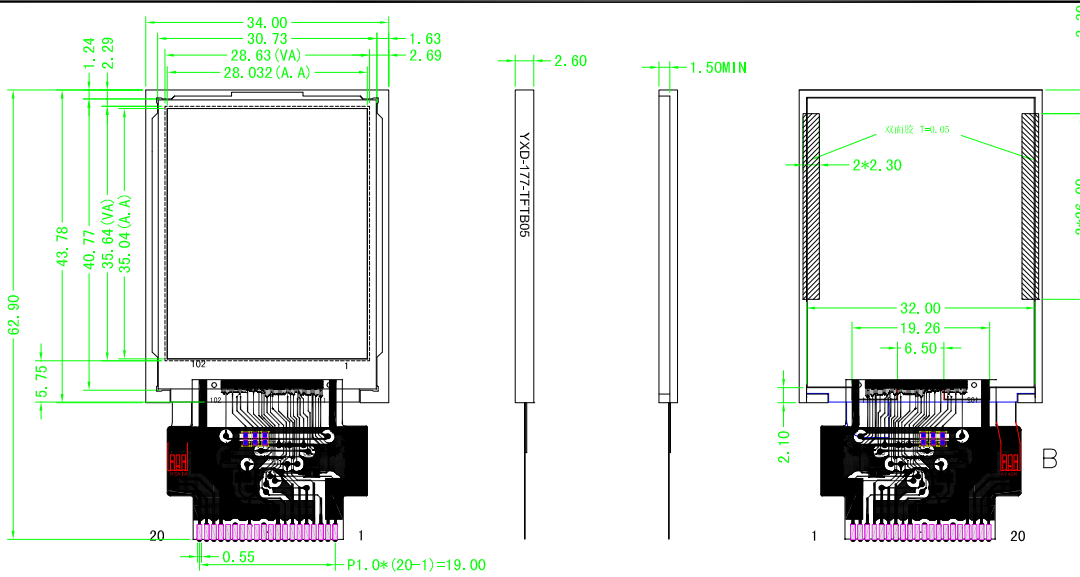
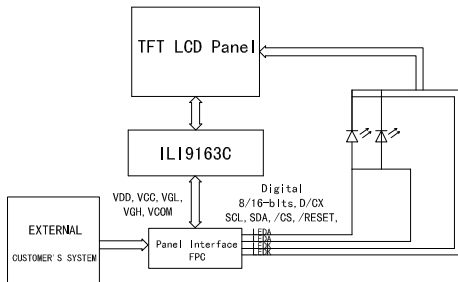


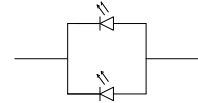
## 1.0 DIMENSIONAL DRAWING



## 2.0 BLOCK DIAGRAM & POWER SUPPLY



背光电路图CIRCUIT DIAGRAM(LED SMD 2 X 1 = 1 dies)



## 3.0 MECHANICAL SPECIFICATIONS & FEATURE

Item	Nominal Dimensions (mm)	Feature	
		Active Screen Size	177" Diagonal
Module Size (W*H*T)	43.78x34.0x2.6	Resolution	128 (RGB)x160
Active Area (W*H)	35.64 x 28.62	View Angle	6 O'clock
Dot x Dot (W*H)	128 (RGB) x 160	Pixel Driving Element	α-si TFT
Dot Pitch (W*H)	---	Pixel Arrangement	RGB Vertical Stripe
Dot Size (W*H)	0.219 (H) x 0.219 (V)	Driving IC	ILI9163C
---	---	Operating Temperature	-20. C to +70. C
---	---	Storage Temperature	-30. C to +80. C

## 4.0 ELECTRICAL CHARACTERISTICS

Item	Symbol	Test Condition	Min.	Typ.	Max.	Unit
LED Supply Voltage	LEDA	AGND=GND=0V Ta=25. C	3.0	3.2	3.5	V
Digital Supply Voltage	VCC	AGND=GND=0V Ta=25. C	1.65	1.8	3.3	V
Analog Supply Voltage	VDD	AGND=GND=0V Ta=25. C	2.5	2.8	4.8	V

## 5.0 INTERFACE PIN CONNECTIONS

Pin No.	Symbol	I/O	Function	Remarks
1	CS	I	LCM selection pin for serial interface; internal pull high	
2	RES	I	LCM reset pin. internal pull high. connected to VDD when not used	
3	D/CX	I	LCM Data/Command Selection Terminal	
4	SCL	I	LCM Clock Terminal (4-Line SPI)	
5	SDA	I	LCM Data Terminal (4-Line SPI)	
6	VDD	P	Power for analog circuit	TYP (2.8V)
7	GND	I	Power ground	
8	VCC	P	Power for digital circuit	TYP (1.8V)
9	GND	I	Power ground	
10-12	NC	-	No Connection	
13	GND	I	Power ground	
14-16	NC	-	No Connection	
17	GND	I	Power ground	
18	LEDA	P	Power for LED backlight (Cathode)	
19	LEDK	P	Power for LED backlight (anode)	
20	LEDK	P	Power for LED backlight (anode)	